

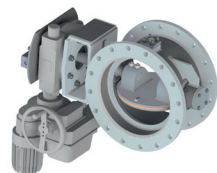
VCL PRODUCT RANGE



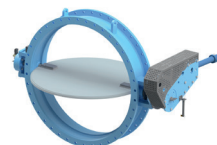
Goggle Valves



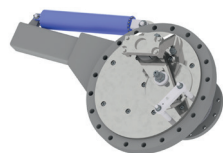
Lever Valves



Double Eccentric Valves



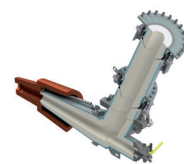
Butterfly and Louver Valves



Dust Outlet Valves



Hot Blast Valves
(Energy saving)



Tuyere Stocks
(Energy saving)



Wedge Gate Valves

ADDITIONAL PRODUCTS

Push Lever Valves, Short Valves, Bleeder Valves, Equalizing & Relief Valves, Back Draft Valves, Non Return Valves, Line Blinds

ADDITIONAL SERVICES

Repair Service, Refurbishment and Modifications,
Spare parts for each kind and brand of Valves



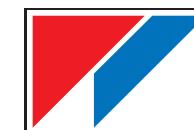
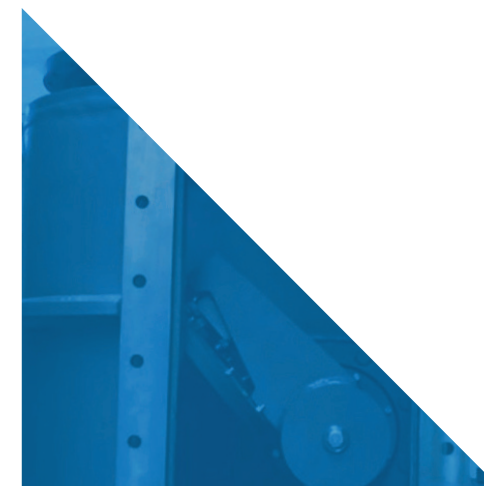
VCL Valve
Competence
Luxembourg

JV of Paul Wurth & www.sab.lu

19, Op der Ahlkärrech
L-6776 Grevenmacher
Tel.: +352 276854-0
Fax: +352 276854-99
E-mail: info@vcl.lu
Web: www.vcl.lu

EQUALIZING/RELIEF VALVES

IMPROVED DESIGN



VCL Valve
Competence
Luxembourg

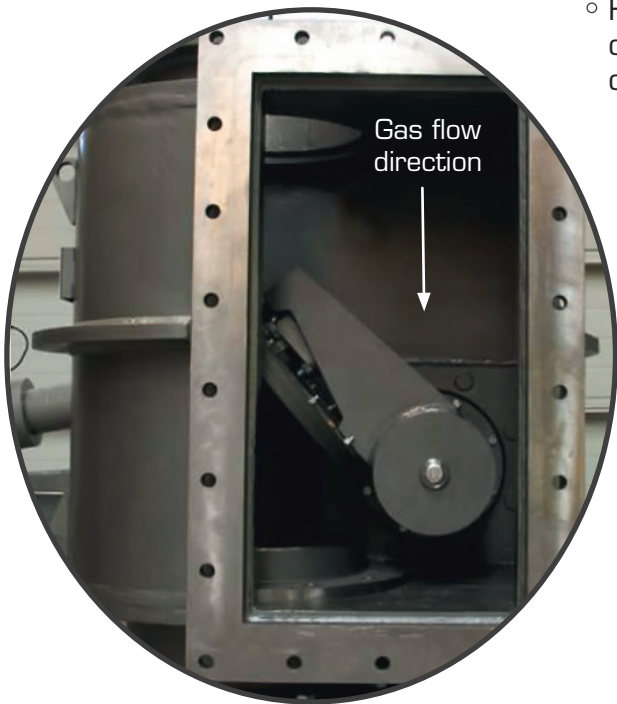
JV of Paul Wurth & www.sab.lu

DESIGN FEATURES OF EQUALIZING VALVES

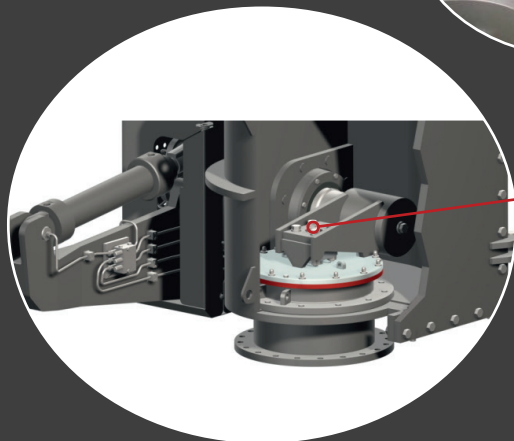
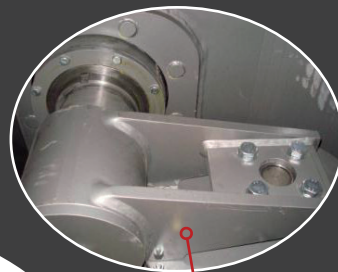
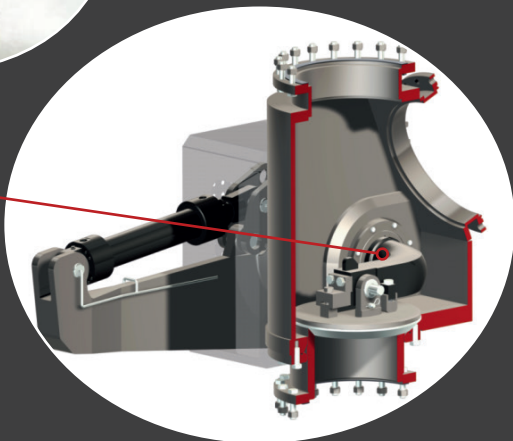
- Fabricated Construction
- Valve actuation with hydraulic Cylinder (Standard)
- Pressure rating up to 3,0 bar
- Service temperatures up to 500 °C
- Nominal sizes DN 250 - DN 600
- Other sizes or operating conditions on request

THIS DESIGN GUARANTEES

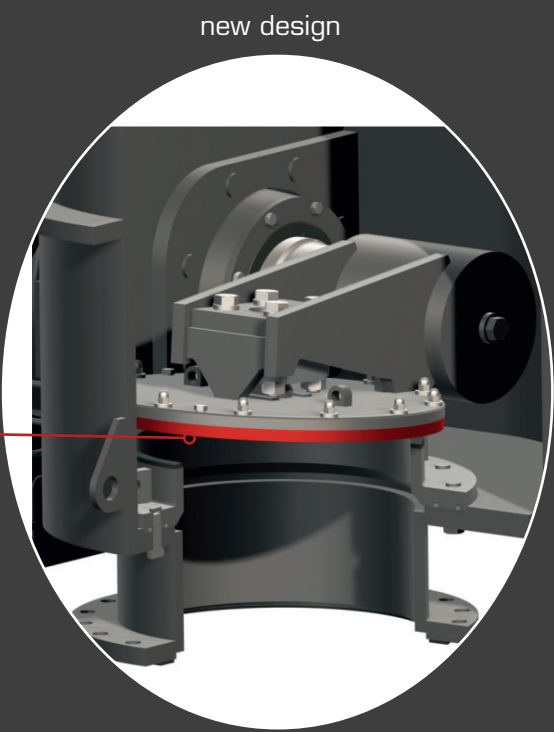
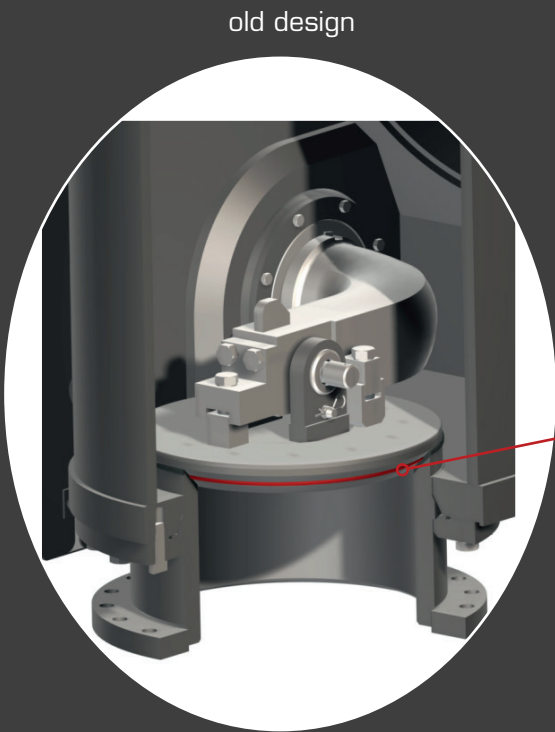
- Seat may be dismantled through the maintenance door without removing the valve itself
- Reduced maintenance and improved accessibility of equipment due to large maintenance door
- The dismantling of the welded lever/flap unit is possible, thus facilitating maintenance and exchange
- Higher reliability & availability thanks to continuously improved design and customer feedback over several years



Full opening diameter	[mm]	250; 400; 500; 600
Opening time	[s]	3
Closing time	[s]	3
Max furnace top pressure	[bar]	3
Hydraulic pressure on cylinder	[bar]	180 - 200



- The forged arm has been replaced by a shaft and a lever
- The lever/flap assembly may be dismantled as one unit



- The seat is a separate part in order to make replacement easier
- Being located inside the casing, the seat may be replaced without removing the valve casing